

Notes

**Legend**

- Corridor 1 —
- Corridor 1A —
- Corridor 2 —
- Corridor 2A —
- Corridor 2B —
- Corridor 3 —
- Corridor 4 —

Noise Bands

- EDGE
- 200m
- 100m
- 50m
- 0

- Baseline Air Monitoring Location
- ▲ Sensitive Receptors for Local assessment
- PM<sub>10</sub> Monitoring Location



ROSCOMMON COUNTY COUNCIL

Courthouse,  
Roscommon,  
Phone: 090-6637100

Majella Hunt  
Director of Services

NATIONAL ROADS DESIGN OFFICE ROSCOMMON

Racecourse Rd.  
Roscommon.  
Phone: 090 6627004

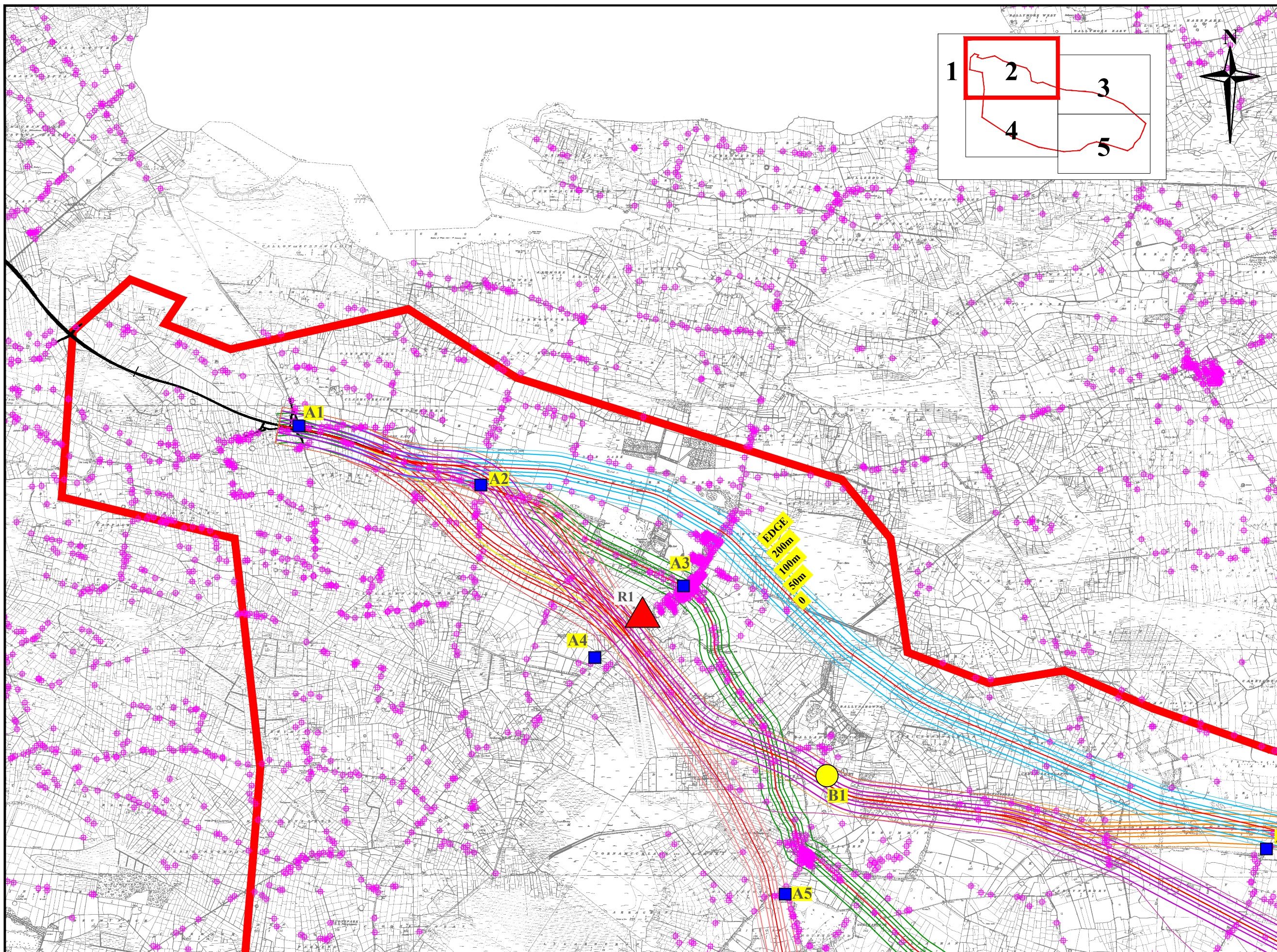
Martin Curley, B.E., CEng.,  
Senior Engineer.

Rev	Description	Checked	Approved	Date
1	Post Peer Review			28/02/08

Project No. & Desc. **RN04250 N5 Strategic Corridor - Route Corridor Selection**

Drawing Title **Noise Bands & Air Quality**

File Folder P:\Proj2004\1155\1155-13-REG\CD003\181 - RSR Drawing\000 December 2007\RN04250-12-367\roscom.rdg	Drawing No.: RN04250-12-367	Layout 1 of 5
Drawn CG	Scale V NA	Date September 2007
	Scale H 1:100,000	



Notes

**Legend**

- Corridor 1 —
- Corridor 1A —
- Corridor 2 —
- Corridor 2A —
- Corridor 2B —
- Corridor 3 —
- Corridor 4 —

Noise Bands

- EDGE
- 200m
- 100m
- 50m
- 0

- Baseline Air Monitoring Location
- ▲ Sensitive Receptors for Local assessment
- PM<sub>10</sub> Monitoring Location



ROSCOMMON COUNTY COUNCIL

Courthouse,  
Roscommon.  
Phone: 090-6637100

Majella Hunt  
Director of Services

NATIONAL ROADS DESIGN OFFICE ROSCOMMON

Racecourse Rd.  
Roscommon.  
Phone: 090 6627004

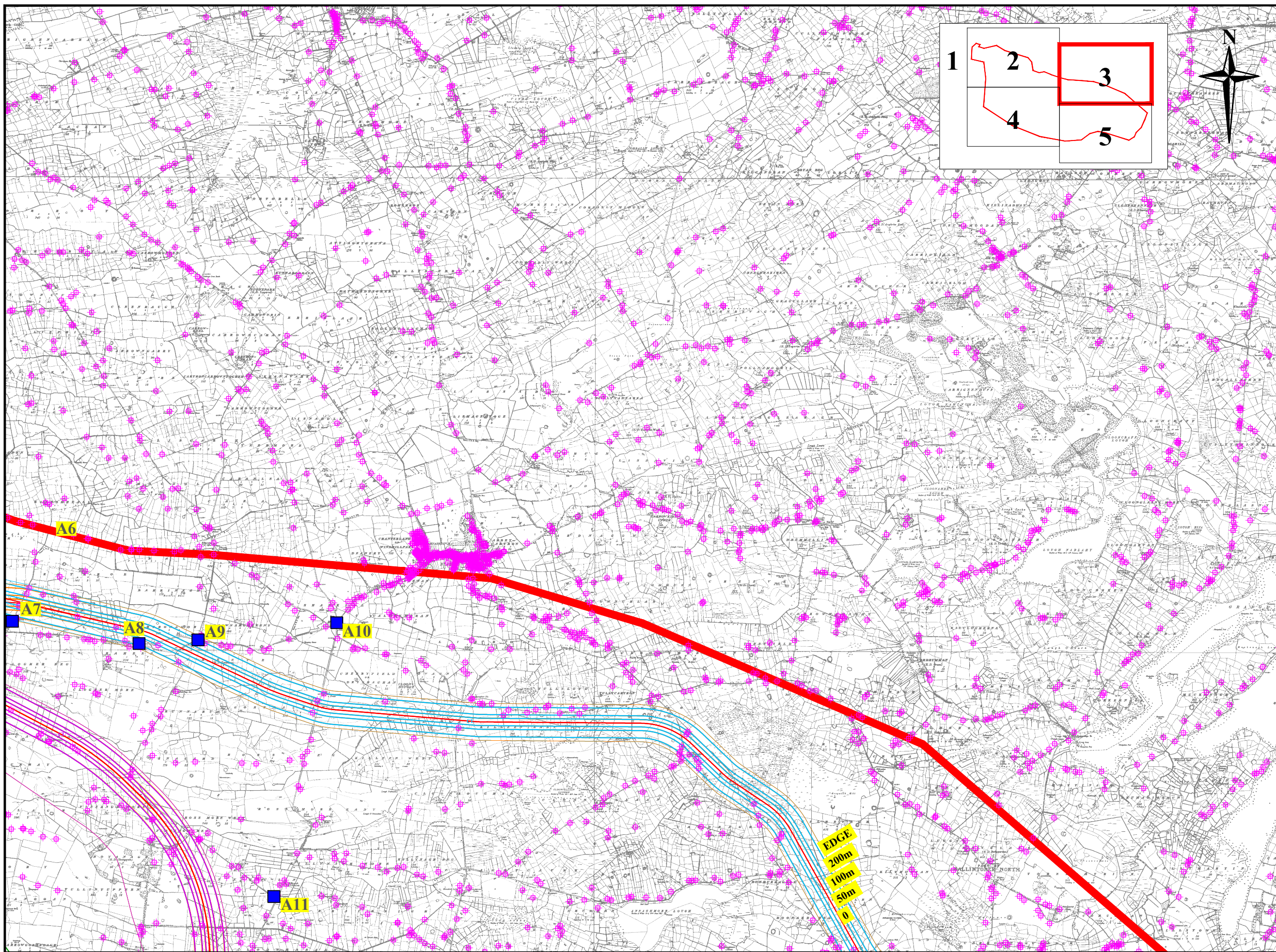
Martin Curley, B.E., CEng.,  
Senior Engineer.

Rev	Description	Checked	Approved	Date
1	Post Peer Review			28/02/08

Project No. & Desc. **RN04250 N5 Strategic Corridor - Route Corridor Selection**

Drawing Title **Noise Bands & Air Quality**

File Folder P:\Prog2004\1155\1155-13-REC\DOCS\3181 - RSR Drawing\000 December 2007\RN04250-12-367\roscom.dwg	Drawing No.: <b>RN04250-12-367</b>	Layout	2 of 5
Drawn CG	Scale V NA	Date	September 2007
	Scale H 1:20,000		



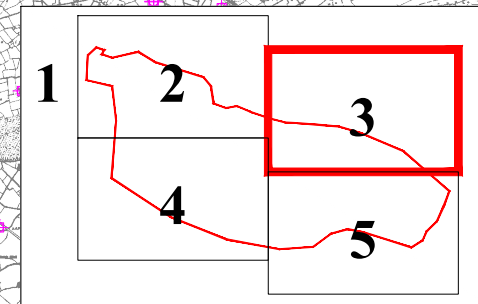
Notes

**Legend**

- Corridor 1 —
- Corridor 1A —
- Corridor 2 —
- Corridor 2A —
- Corridor 2B —
- Corridor 3 —
- Corridor 4 —

- Noise Bands
- EDGE
  - 200m
  - 100m
  - 50m
  - 0

- Baseline Air Monitoring Location
- ▲ Sensitive Receptors for Local assessment
- PM<sub>10</sub> Monitoring Location



ROSCOMMON COUNTY COUNCIL

Courthouse, Roscommon. Phone: 090-6637100

Majella Hunt, Director of Services

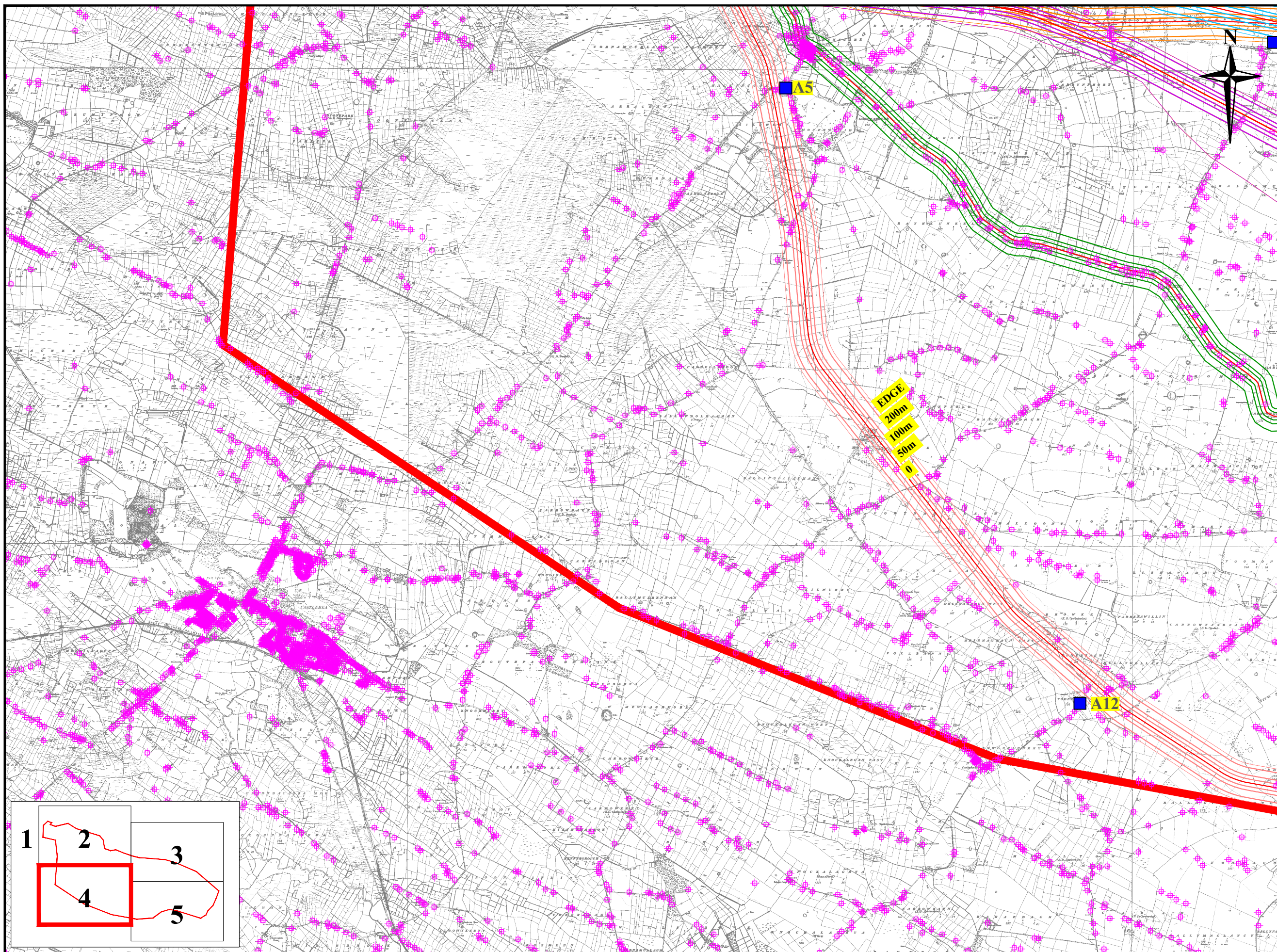
NATIONAL ROADS DESIGN OFFICE ROSCOMMON

Racecourse Rd. Roscommon. Phone: 090 6627004

Martin Curley, B.E., CEng., Senior Engineer.

Rev	Description	Checked	Approved	Date
1	Post Peer Review			28/02/08

Project No. & Desc. RN04250 N5 Strategic Corridor - Route Corridor Selection		Drawing Title Noise Bands & Air Quality	
File Folder P:\Proj\2004\1151\1151-13-REC\DOCS\01 - RSR Drawings\000	Drawing No.: RN04250-12-367	Layout 3 of 5	Date September 2007
Drawn CG	Scale V NA	Scale H 1:20,000	



Notes

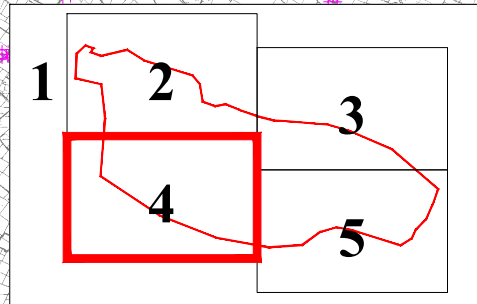
**Legend**

- Corridor 1 —
- Corridor 1A —
- Corridor 2 —
- Corridor 2A —
- Corridor 2B —
- Corridor 3 —
- Corridor 4 —

Noise Bands

- EDGE
- 200m
- 100m
- 50m
- 0

- Baseline Air Monitoring Location
- ▲ Sensitive Receptors for Local assessment
- PM<sub>10</sub> Monitoring Location



ROSCOMMON COUNTY COUNCIL

Courthouse,  
Roscommon.  
Phone: 090-6637100

Majella Hunt  
Director of Services

NATIONAL ROADS DESIGN OFFICE ROSCOMMON

Racecourse Rd.  
Roscommon.  
Phone: 090 6627004

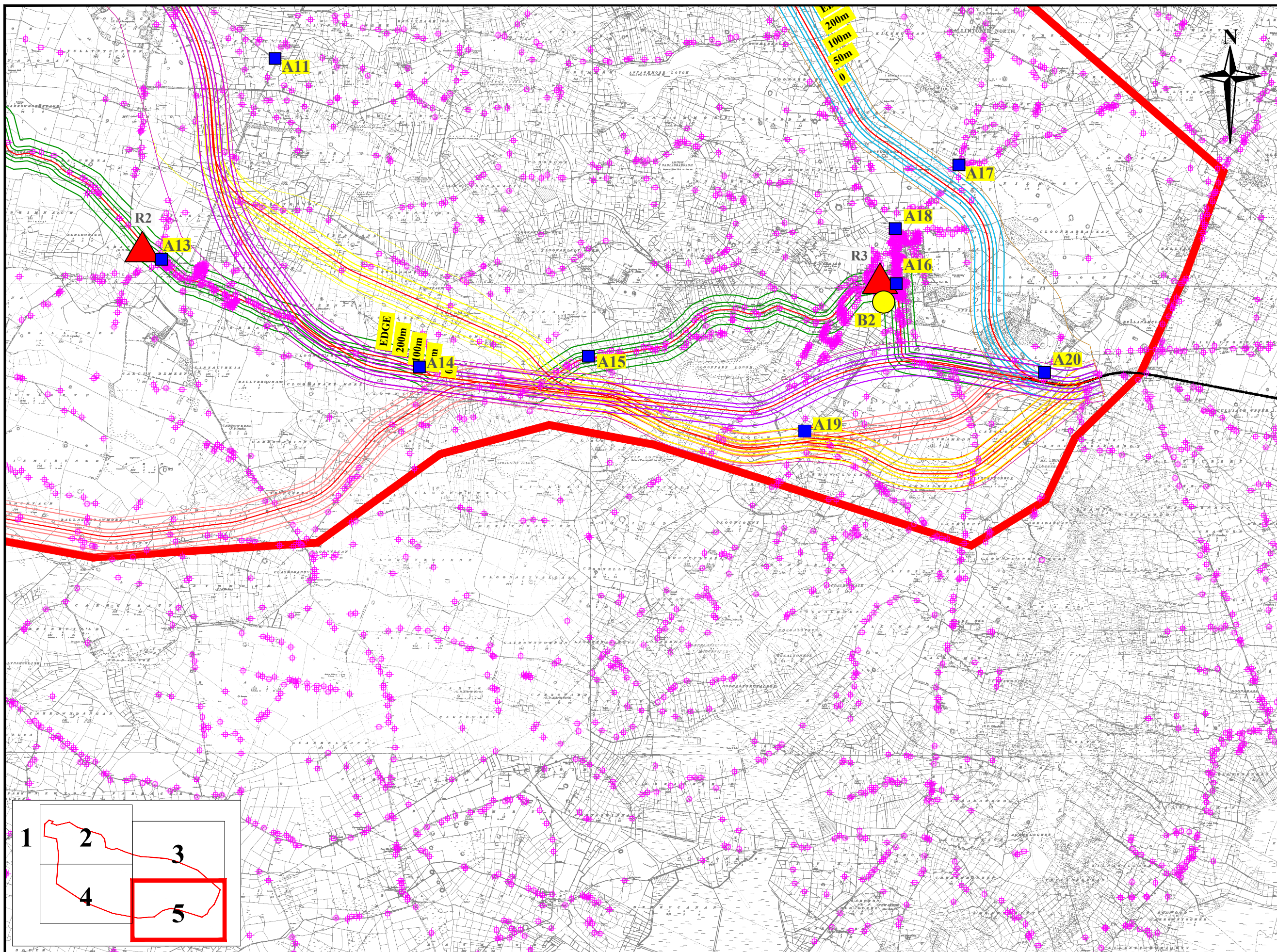
Martin Curley, B.E., CEng.,  
Senior Engineer.

Rev	Description	Checked	Approved	Date
1	Post Peer Review			28/02/08

Project No. & Desc. **RN04250 N5 Strategic Corridor - Route Corridor Selection**

Drawing Title **Noise Bands & Air Quality**

File Folder P:\Proj\2004\11\1101105-12\REC\DOCS\101 - RSR Drawings\000 December 2007\RN04250-12-367\NoiseBands.dwg	Drawing No.: <b>RN04250-12-367</b>	Layout <b>4 of 5</b>
Drawn <b>CG</b>	Scale V <b>NA</b>	Date <b>September 2007</b>
	Scale H <b>1:20,000</b>	



Notes

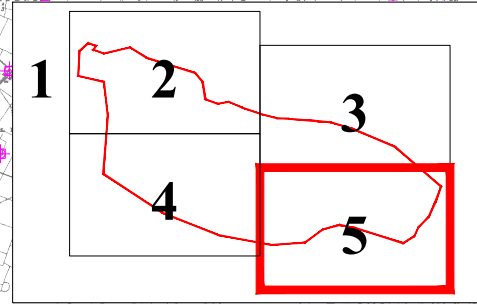
**Legend**

- Corridor 1 —
- Corridor 1A —
- Corridor 2 —
- Corridor 2A —
- Corridor 3 —
- Corridor 4 —

Noise Bands

- EDGE |||
- 200m |||
- 100m |||
- 50m |||
- 0 |||

- Baseline Air Monitoring Location
- ▲ Sensitive Receptors for Local assessment
- PM<sub>10</sub> Monitoring Location



Rev	Description	Checked	Approved	Date
1	Post Peer Review			28/02/08

Project No. & Desc. <b>RN04250 N5 Strategic Corridor - Route Corridor Selection</b>			
Drawing Title <b>Noise Bands &amp; Air Quality</b>			
File Folder P:\Prog\2004\1155\1155-12-367\003\181 - RSR Drawing\003	Drawing No.: RN04250-12-367	Layout	5 of 5
Drawn CG	Scale V NA	Date	September 2007
	Scale H 1:20,000		